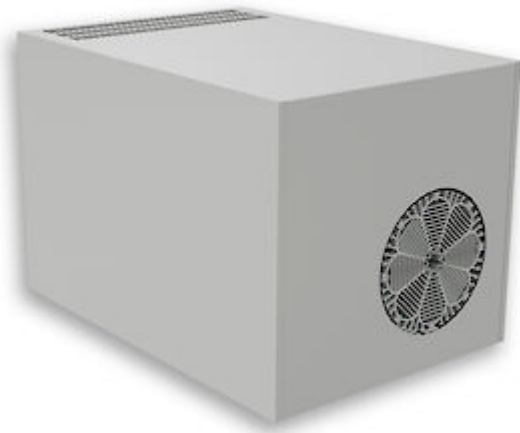


Roof mounted air conditioner



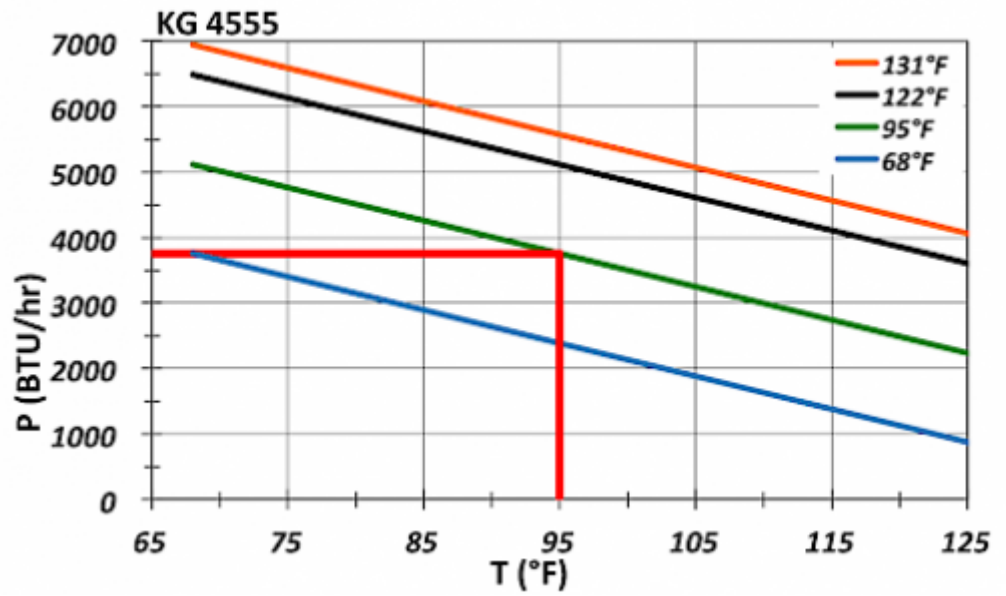
Description

Order Number:	45552001
Brand Name:	SLIMLINE TOP
Color:	RAL 7035
Housing Material:	Mild steel, powder coated
Ingress protection:	NEMA 12
Approvals:	CE, cURus

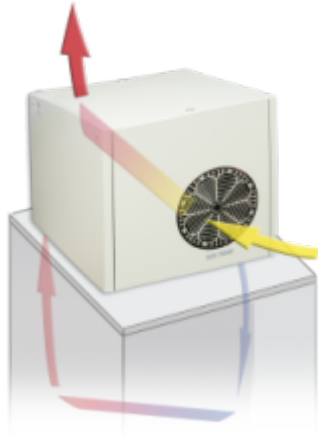
Technical data

Cooling capacity 95F/95F:	3920 BTU
Cooling capacity 95F/122F:	2560 BTU
Compressor type:	Rotary piston compressor
Refrigerant / GWP:	R 134a / 1430
Refrigerant charge:	500 g / 17.6 oz
High / low pressure:	35 / 6 bar 508 / 88 psig
Operating temperature range:	50°F - 122°F
Air volume flow (system / unimpeded):	Ambient air circuit: 212 / 706 cfm Cabinet air circuit: 294 / 383 cfm
Mounting:	Roof mounted
Dimension H x W x D:	15.75 x 15.75 x 23.62 inch
Weight:	121.25 lbs.
Cut out dimensions:	4.25 x 20.86 inch (x2)
Voltage / Frequency:	380-415 V 50 Hz 3~ 400-460 V 60 Hz 3~
Current 95F95F:	2.3 A @ 50 Hz 2.5 A @ 60 Hz
Starting current:	8.2 A
Max. current:	2.8 A
Nominal power 95F95F:	800 W @ 50 Hz 900 W @ 60 Hz
Max. power:	1.09 kW
Fuse:	3 x 6 A (T)
Short-circuit current rating:	5 kA
Connection:	Connection terminal block

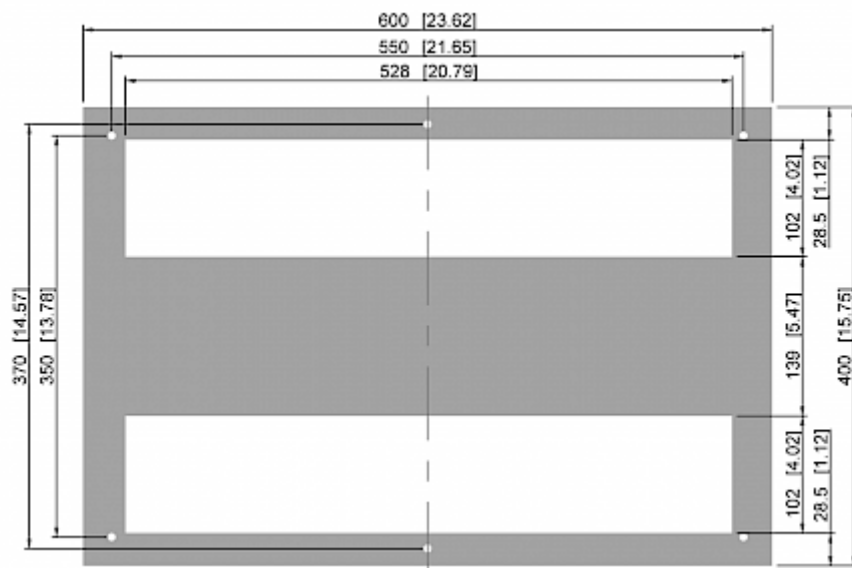
Performance graph:



Air flow:



Cut out dimensions:



Order Information

Stainless steel housing part no.	4555202
Taric code	84158200
GTIN (EAN)	5350604330115