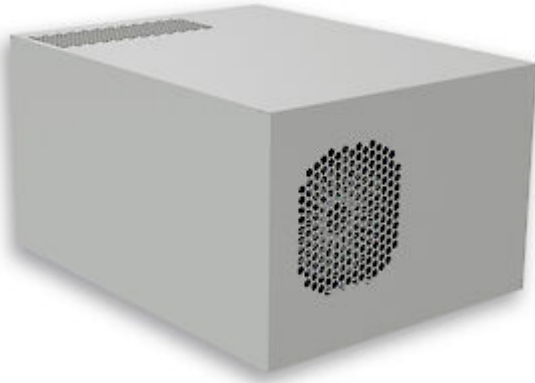


Roof mounted cooling unit



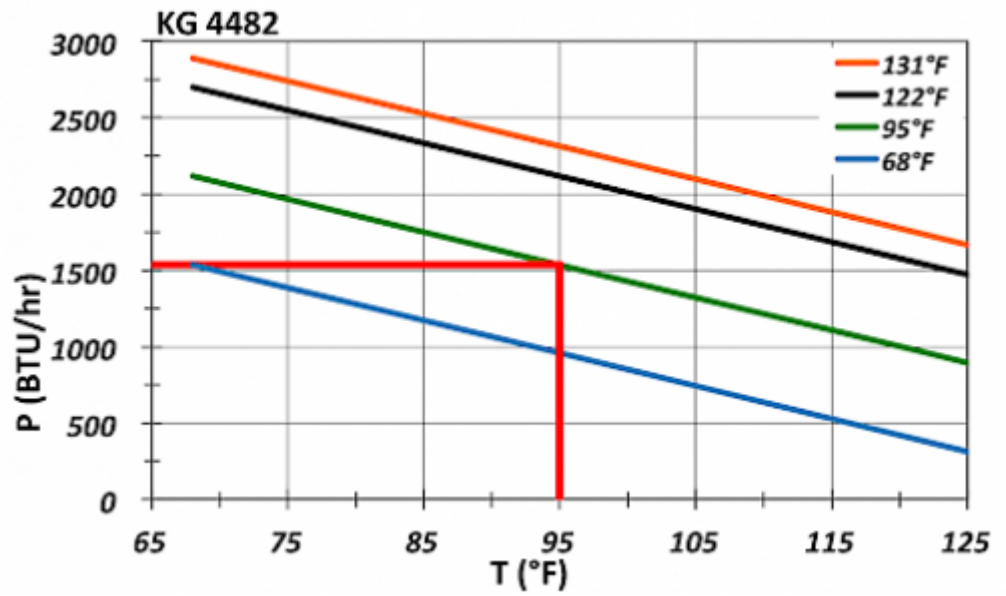
Description

Order Number:	44820001
Brand Name:	SLIMLINE TOP
Color:	RAL 7035
Housing Material:	Mild steel, powder coated
Ingress protection:	NEMA 12
Approvals:	CE, cURus

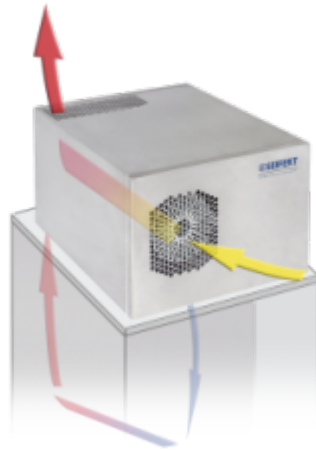
Technical data

Cooling capacity 95F/95F:	1570 BTU
Cooling capacity 95F/122F:	960 BTU
Compressor type:	Rotary piston compressor
Refrigerant / GWP:	R 134a / 1430
Refrigerant charge:	152 g / 5.4 oz
High / low pressure:	35 / 6 bar 508 / 88 psig
Operating temperature range:	50°F - 122°F
Air volume flow (system / unimpeded):	Ambient air circuit: 147 / 383 cfm Cabinet air circuit: 82 / 147 cfm
Mounting:	Roof mounted
Dimension H x W x D:	9.05 x 13 x 16.93 inch
Weight:	50.7 lbs.
Cut out dimensions:	5.59 x 3.85 inch/ 5.59 x 5.80 inch
Voltage / Frequency:	230 V ~ 50/60 Hz
UL Voltage / Frequency:	230 V ~ 50/60 Hz
Current 95F95F:	2.3 A
Starting current:	6.8 A
Max. current:	2.8 A
Nominal power 95F95F:	475 W @ 50 Hz 530 W @ 60 Hz
Max. power:	630 W
Fuse:	6 A (T)
Short-circuit current rating:	5 kA
Connection:	Connection terminal block

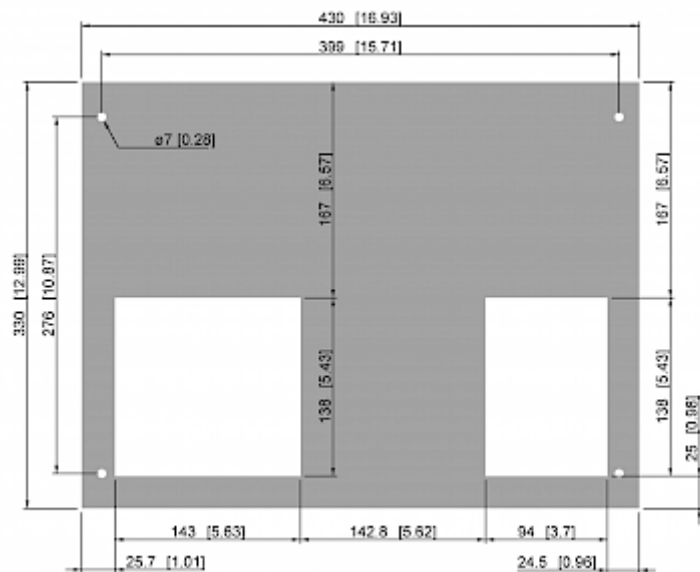
Performance graph:



Air flow:



Cut out dimensions:



Order Information

Stainless steel housing part no.	4482002
Taric code	84158200
GTIN (EAN)	5350604330009