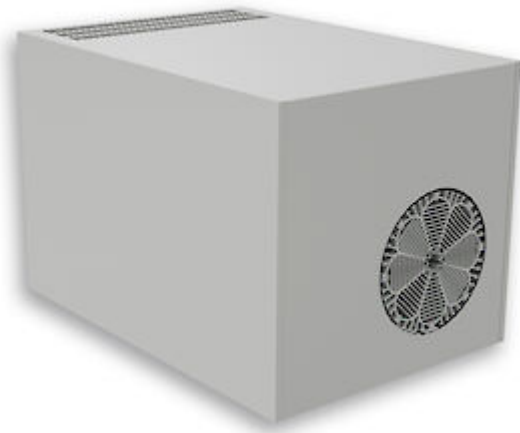


## Roof mounted air conditioner



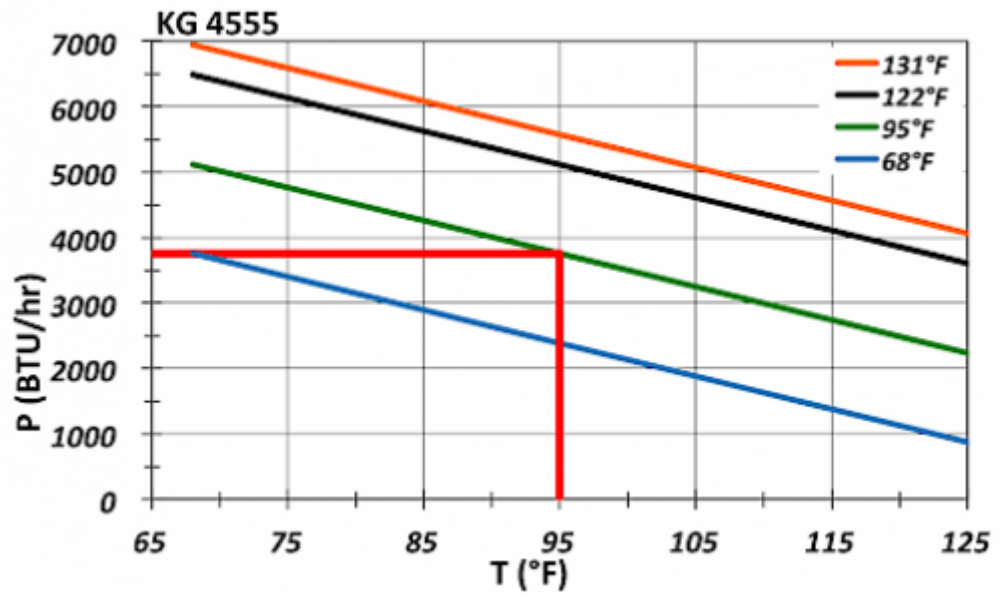
## Description

<b>Order Number:</b>	45550001
<b>Brand Name:</b>	SLIMLINE TOP
<b>Color:</b>	RAL 7035
<b>Housing Material:</b>	Mild steel, powder coated
<b>Ingress protection:</b>	NEMA 12
<b>Approvals:</b>	CE, cURus

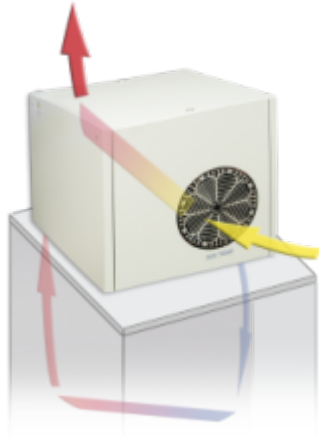
## Technical data

<b>Cooling capacity 95F/95F:</b>	3920 BTU
<b>Cooling capacity 95F/122F:</b>	2560 BTU
<b>Compressor type:</b>	Rotary piston compressor
<b>Refrigerant / GWP:</b>	R 134a / 1430
<b>Refrigerant charge:</b>	500 g / 17.6 oz
<b>High / low pressure:</b>	35 / 6 bar 508 / 88 psig
<b>Operating temperature range:</b>	50°F - 122°F
<b>Air volume flow (system / unimpeded):</b>	Ambient air circuit: 212 / 706 cfm Cabinet air circuit: 294 / 383 cfm
<b>Mounting:</b>	Roof mounted
<b>Dimension H x W x D:</b>	15.75 x 15.75 x 23.62 inch
<b>Weight:</b>	121.25 lbs
<b>Cut out dimensions:</b>	4.25 x 20.86 inch (x2)
<b>Voltage / Frequency:</b>	230 V ~ 50/60 Hz
<b>UL Voltage / Frequency:</b>	230/240V ~ 50/60Hz
<b>Current 95F95F:</b>	4.0 A @ 50 Hz 4.4 A @ 60 Hz
<b>Starting current:</b>	15 A
<b>Max. current:</b>	4.8 A
<b>Nominal power 95F95F:</b>	800 W @ 50 Hz 900 W @ 60 Hz
<b>Max. power:</b>	1.09 kW
<b>Fuse:</b>	10 A (T)
<b>Short-circuit current rating:</b>	5 kA
<b>Connection:</b>	Connection terminal block

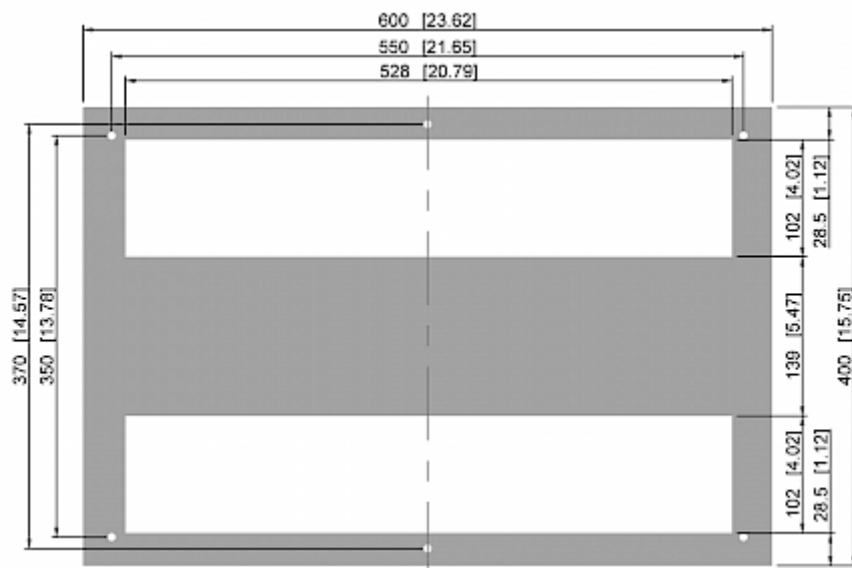
**Performance graph:**



**Air flow:**



**Cut out dimensions:**



## Order Information

<b>Stainless steel housing part no.</b>	4555002
<b>Taric code</b>	84158200
<b>GTIN (EAN)</b>	5350604330085